

PICNIC AT THE POINT

Are you ready for some fun in the sun?

The Grand Court Picnic

is at Dash Point State Park in Federal Way

on Saturday July 24th

from 10:00am to 5:00pm

Lunch will be at 1:00pm.

Please bring a side dish to share.

Burgers and Hot Dogs will be provided.

A \$7.00 donation is being requested for lunch.

Bring your family and friends.

There will be yard games, board games, card games and more.



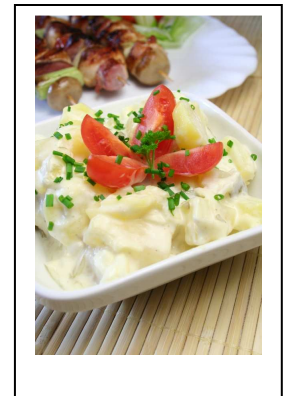
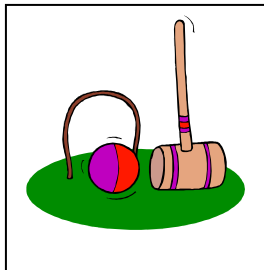
Potato Salad Cook Off

If you would like to compete

bring your best Potato Salad

Entry fee of \$3.00

Prizes for the top 3 salads.



The “Announcement” for the Grand Conductress’s Choice

will be at 2:30pm.



Directions and Camping Information attached.

Directions to Dash Point State Park

*Exit off I-5 at 320th in Federal Way. Follow 320th to 47th Ave SW (it's a T where 320th ends)
Turn right go to the STOP sign. Turn left onto Dash Point Rd. / Hwy 509. Travel approx. ¾ of
a mile and turn right into Dash Point State Park. Stay to the right past the entrance booth.
Pass the office and continue approx. ¼ mile to the Point Shelter area.
You are there. Find a parking place and come join the fun!!*

Camping Information

*Camping reservations can be made at www.parks.wa.gov or 888-226-7688. The campsites
that are pull through campsites are:*

*Campsites #'s 88, 89, 92, & 94 are next to each other in the upper campground. No Electricity
or water. Tents only*

*Campsite #'s 2, 4, 36, 37, 40, 44, 48, & 49 are in the lower campground These have electricity
and water*

There is tent camping close by to each of these areas as well.

Spaces are limited and the cost is estimated at approx. \$34.00 per night.

*For questions or more information, contact H.L. Diana Esterly at lightkeepers2012@juno.com
or at 253-221-5410*

See you all there!

